

```

=====
Injection Date   : 6/10/05 8:53:37 AM          Seq. Line   :    1
Sample Name     : STD G5 6-10                 Vial        :   18
Acq. Operator   : INERT GAS                   Inj         :    1
                                           Inj Volume  : Manually

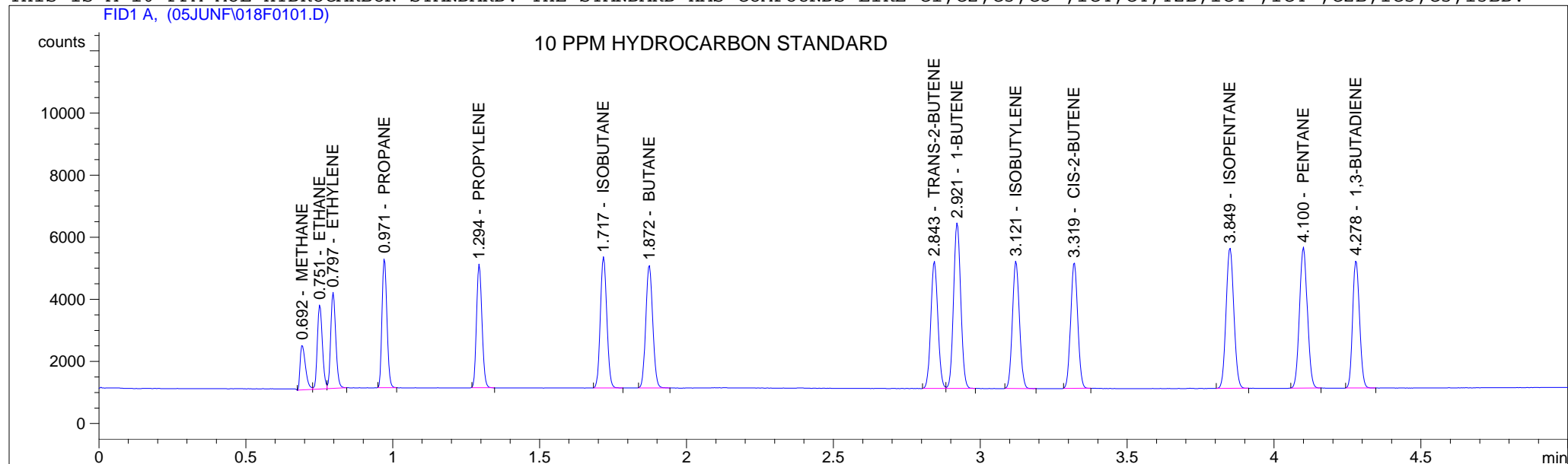
```

```

Acq. Method     : C:\HPCHEM\1\METHODS\STD-G5.M
Last changed    : 5/29/05 8:33:44 PM by INERT GAS
Analysis Method : C:\HPCHEM\1\METHODS\STD-G5.M
Last changed    : 7/11/05 1:44:16 PM by ISGAS GC7 FID
                (modified after loading)

```

THIS IS A 10 PPM MOL HYDROCARBON STANDARD. THE STANDARD HAS COMPOUNDS LIKE C1,C2,C3,C3=,IC4,C4,T2B,1C4=,IC4=,C2B,IC5,C5,13BD.



```

=====
External Standard Report
=====

```

```

Sorted By       : Signal
Calib. Data Modified : 7/11/05 1:43:29 PM
Multiplier      : 1.0000
Dilution        : 1.0000

```

```

Signal 1: FID1 A,
Uncalibrated Peaks : compound name not specified

```

RetTime [min]	Type	Area counts*s	Amt/Area	Amount [PPM MOL]	Grp	Name
0.692	PV +	1838.14355	5.42822e-3	9.97784		METHANE
0.751	VV +	3264.32739	3.10525e-3	10.13654		ETHANE
0.797	VB +	3733.12280	2.69186e-3	10.04903		ETHYLENE
0.971	BB +	4896.56592	2.05761e-3	10.07524		PROPANE
1.294	BB +	5184.08984	1.94571e-3	10.08672		PROPYLENE
1.717	BB +	6481.45361	1.55428e-3	10.07401		ISOBUTANE

RetTime [min]	Type	Area counts*s	Amt/Area	Amount [PPM MOL]	Grp	Name
1.872	BB +	6482.23828	1.55538e-3	10.08236		BUTANE
2.843	BV +	6861.59326	1.46695e-3	10.06563		TRANS-2-BUTENE
2.921	VB +	9111.03516	1.45962e-3	13.29866		1-BUTENE
3.121	BB +	6868.60742	1.46843e-3	10.08608		ISOBUTYLENE
3.319	BP +	6755.18945	1.49132e-3	10.07414		CIS-2-BUTENE
3.849	BB +	8401.12109	1.19935e-3	10.07587		ISOPENTANE
4.100	BB +	8400.22266	1.19980e-3	10.07862		PENTANE
4.278	BB +	6570.32031	1.53716e-3	10.09962		1,3-BUTADIENE

Totals : 144.26037

1 Warnings or Errors :

Warning : Calibration warnings (see calibration table listing)

=====
*** End of Report ***