

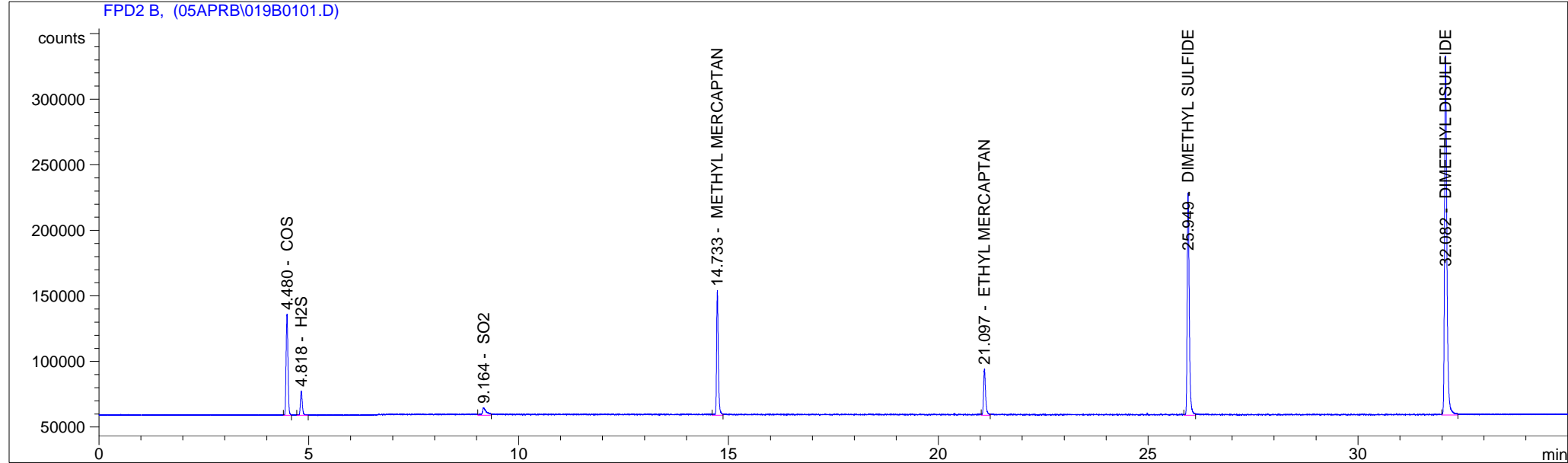
```

=====
Injection Date   : 4/13/05 7:09:13 PM          Seq. Line   :    1
Sample Name     : S-04 10PPM N2              Vial        :   19
Acq. Operator  : ISGAS GC # 1                Inj         :    1
                                           Inj Volume  : Manually

Acq. Method    : C:\HPCHEM\2\METHODS\SUL10.M
Last changed   : 4/9/05 8:18:24 AM by ISGAS GC # 1
Analysis Method : C:\HPCHEM\2\METHODS\SUL10.M
Last changed   : 7/11/05 1:31:27 PM by ISGAS GC # 1
                (modified after loading)

```

## 10 PPM SULFIDE METHOD



## External Standard Report

```

=====
Sorted By       :      Signal
Calib. Data Modified : 7/11/05 1:31:25 PM
Multiplier      :      1.0000
Dilution        :      1.0000
Sample Amount   :      1.00000 [PPM] (not used in calc.)

```

```

Signal 1: FPD2 B,
Uncalibrated Peaks :      compound name not specified

```

RetTime [min]	Type	Area counts*s	Amt/Area	Amount [PPM]	Grp	Name
4.480	VV	2.42074e5	4.15860e-5	10.06690		COS
4.818	VV	6.17222e4	1.62280e-4	10.01626		H2S
9.164	VV	4.30151e4	2.33073e-4	10.02566		SO2
14.733	VV	2.72695e5	3.70248e-5	10.09648		METHYL MERCAPTAN
21.097	VV	1.20414e5	8.37410e-5	10.08360		ETHYL MERCAPTAN

RetTime [min]	Type	Area counts*s	Amt/Area	Amount [PPM]	Grp	Name
25.949	VV	5.82482e5	1.71739e-5	10.00347		DIMETHYL SULFIDE
32.082	VV	1.06083e6	9.51215e-6	10.09080		DIMETHYL DISULFIDE

Totals : 70.38317

=====  
\*\*\* End of Report \*\*\*