

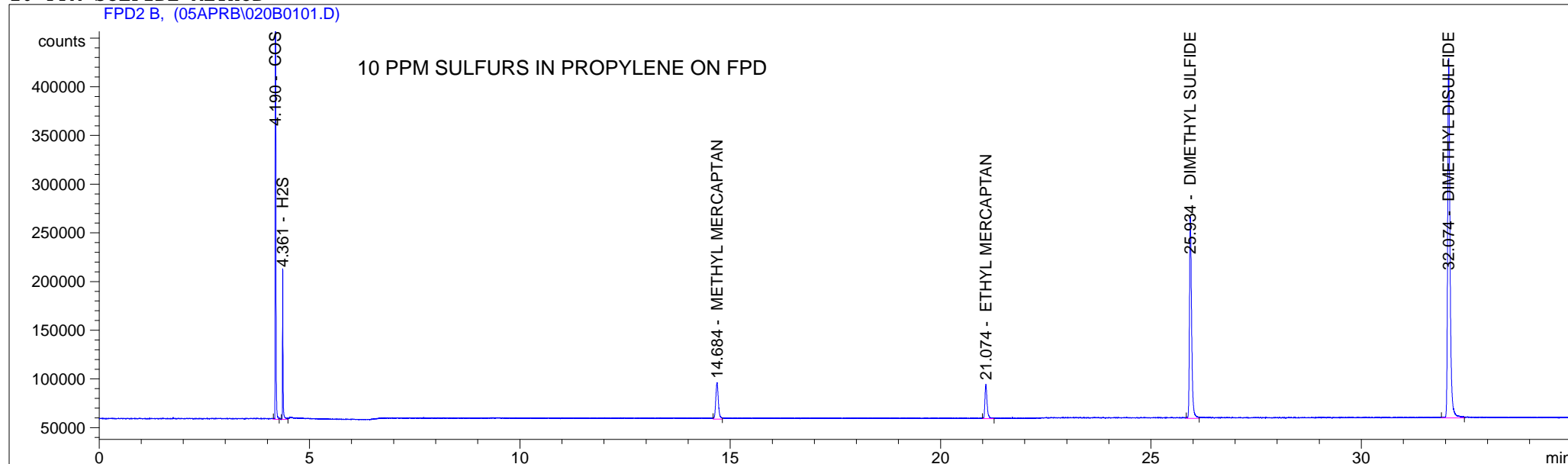
```

=====
Injection Date   : 4/13/05 8:01:19 PM           Seq. Line :    1
Sample Name     : S-06 10PPM PRE                Vial      :   20
Acq. Operator   : ISGAS GC # 1                 Inj       :    1
                                           Inj Volume: Manually

Acq. Method     : C:\HPCHEM\2\METHODS\SUL10.M
Last changed    : 4/13/05 8:19:08 PM by ISGAS GC # 1
                  (modified after loading)
Analysis Method : C:\HPCHEM\2\METHODS\SUL10.M
Last changed    : 7/11/05 2:05:34 PM by ISGAS GC # 1
                  (modified after loading)

```

## 10 PPM SULFIDE METHOD



## External Standard Report

```

Sorted By       : Signal
Calib. Data Modified : Monday, July 11, 2005 1:59:07 PM
Multiplier      : 1.0000
Dilution        : 1.0000
Sample Amount    : 1.00000 [PPM] (not used in calc.)

```

```

Signal 1: FPD2 B,
Uncalibrated Peaks : compound name not specified

```

RetTime [min]	Type	Area counts*s	Amt/Area	Amount [PPM]	Grp	Name
4.190	VV	1.01711e6	9.92044e-6	10.09021		COS
4.361	VV	1.37762e5	7.31208e-5	10.07329		H2S
14.684	VV	1.63581e5	6.19708e-5	10.13724		METHYL MERCAPTAN
21.074	VV	1.27498e5	7.85993e-5	10.02123		ETHYL MERCAPTAN

RetTime [min]	Type	Area counts*s	Amt/Area	Amount [PPM]	Grp	Name
25.934	VV	7.31816e5	1.36459e-5	9.98630		DIMETHYL SULFIDE
32.074	VV	1.46670e6	6.88151e-6	10.09314		DIMETHYL DISULFIDE

Totals : 60.40141

=====  
\*\*\* End of Report \*\*\*