

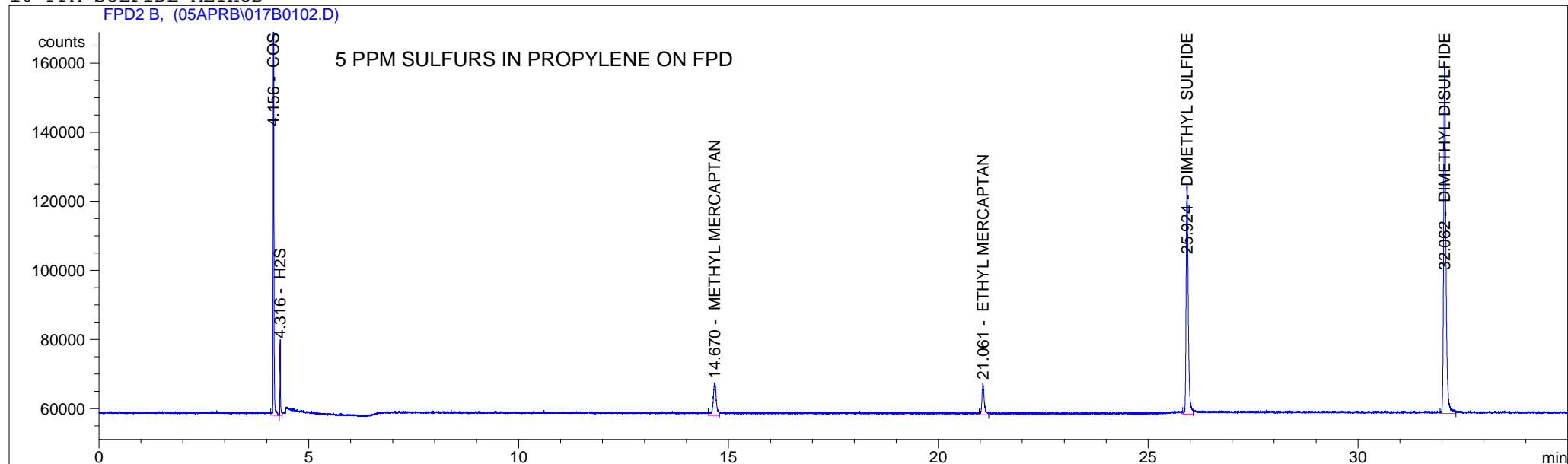
```

=====
Injection Date   : 4/9/05 9:13:30 AM           Seq. Line :    1
Sample Name     : BL05A0005R                 Vial      :   17
Acq. Operator   : ISGAS GC # 1              Inj       :    2
                                           Inj Volume: Manually

Acq. Method     : C:\HPCHEM\2\METHODS\SUL10.M
Last changed    : 4/9/05 8:18:24 AM by ISGAS GC # 1
Analysis Method : C:\HPCHEM\2\METHODS\SUL10.M
Last changed    : 7/11/05 2:11:30 PM by ISGAS GC # 1
                  (modified after loading)

```

## 10 PPM SULFIDE METHOD



## External Standard Report

```

Sorted By      : Signal
Calib. Data Modified : Monday, July 11, 2005 2:09:38 PM
Multiplier     : 1.0000
Dilution       : 1.0000
Sample Amount   : 1.00000 [PPM] (not used in calc.)

```

```

Signal 1: FPD2 B,
Uncalibrated Peaks : compound name not specified

```

RetTime [min]	Type	Area counts*s	Amt/Area	Amount [PPM]	Grp	Name
4.156	VP	3.81190e5	1.30727e-5	4.98320		COS
4.316	VV	1.90875e4	2.63967e-4	5.03848		H2S
14.670	VV	5.00100e4	1.02125e-4	5.10726		METHYL MERCAPTAN
21.061	VV	3.59573e4	1.38977e-4	4.99725		ETHYL MERCAPTAN
25.924	VV	2.37122e5	2.05774e-5	4.87935		DIMETHYL SULFIDE

RetTime [min]	Type	Area counts*s	Amt/Area	Amount [PPM]	Grp	Name
32.062	VV	3.89109e5	1.30257e-5	5.06844		DIMETHYL DISULFIDE

Totals : 30.07398

=====  
\*\*\* End of Report \*\*\*