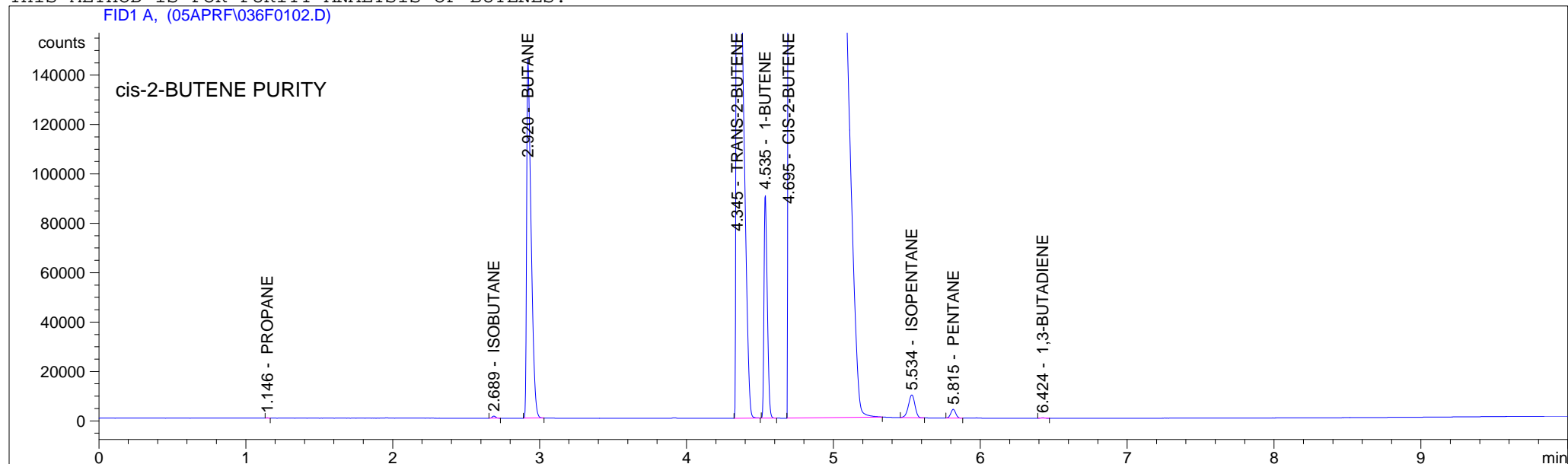


```
=====
Injection Date   : 4/20/05 12:52:57 PM          Seq. Line   :    1
Sample Name     : C2B041805 C2B                Vial        :   36
Acq. Operator   : ISGAS GC# 7 FID              Inj         :    2
                                           Inj Volume  : Manually
Acq. Method     : C:\HPCHEM\1\METHODS\S050204.M
Last changed    : 4/20/05 12:57:56 PM by ISGAS GC# 7 FID
                  (modified after loading)
Analysis Method : C:\HPCHEM\1\METHODS\2BUTENES.M
Last changed    : 7/11/05 4:18:23 PM by ISGAS GC7 FID
                  (modified after loading)
THIS METHOD IS FOR PURITY ANALYSIS OF BUTENES.
=====
```



```
=====
External Standard Report
=====
```

```
Sorted By      :      Signal
Calib. Data Modified : 7/11/05 4:16:01 PM
Multiplier     :      1.0000
Dilution       :      1.0000
```

```
Signal 1: FID1 A,
Uncalibrated Peaks :      compound name not specified
```

RetTime [min]	Type	Area counts*s	Amt/Area	Amount [% MOL]	Grp	Name
1.146	BB +	145.14720	4.77621e-6	6.93253e-4		PROPANE
2.689	BB +	1422.94336	3.94512e-6	5.61368e-3		ISOBUTANE
2.920	BB +	3.07072e5	2.90217e-6	8.91175e-1		BUTANE
4.345	BB +	8.46513e5	3.26084e-6	2.76034		TRANS-2-BUTENE
4.535	BB +	1.40301e5	3.45389e-6	4.84586e-1		1-BUTENE

RetTime [min]	Type	Area counts*s	Amt/Area	Amount [% MOL]	Grp	Name
4.695	PB +	2.33462e7	3.93471e-6	91.86063		CIS-2-BUTENE
5.534	BB +	2.86370e4	3.17843e-6	9.10208e-2		ISOPENTANE
5.815	BP +	8358.78027	3.10372e-6	2.59433e-2		PENTANE
6.424	BB +	318.00198	2.38522e-5	7.58505e-3		1,3-BUTADIENE

Totals : 96.12759

1 Warnings or Errors :

Warning : Calibration warnings (see calibration table listing)

=====
*** End of Report ***