

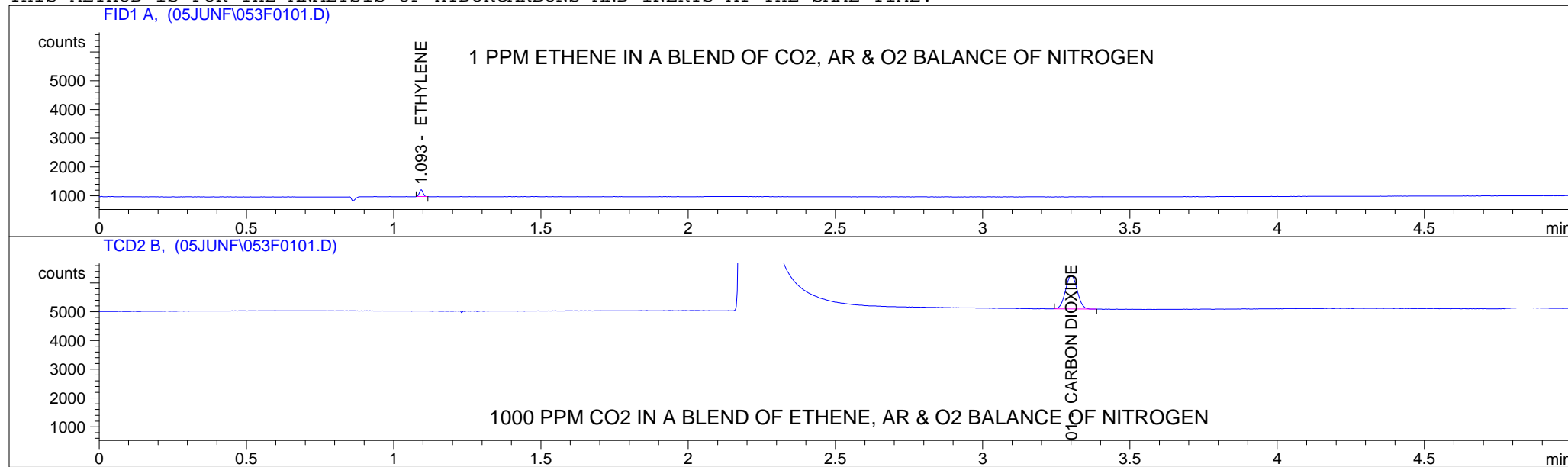
```

=====
Injection Date   : 6/27/05 6:13:38 PM           Seq. Line   :    1
Sample Name     : BL0506047R054481           Vial        :   53
Acq. Operator   : INERT GAS                   Inj         :    1
                                           Inj Volume  : Manually

Acq. Method     : C:\HPCHEM\1\METHODS\STDG510T.M
Last changed    : 6/27/05 6:13:15 PM by INERT GAS
Analysis Method : C:\HPCHEM\1\METHODS\STDG510T.M
Last changed    : 7/11/05 3:44:06 PM by ISGAS GC7 FID
                (modified after loading)

```

THIS METHOD IS FOR THE ANALYSIS OF HYDORCARBONS AND INERTS AT THE SAME TIME.



External Standard Report

```

Sorted By       :      Signal
Calib. Data Modified : 7/11/05 3:38:02 PM
Multiplier     :      1.0000
Dilution       :      1.0000

```

Signal 1: FID1 A,
 Uncalibrated Peaks : compound name not specified

RetTime [min]	Type	Area counts*s	Amt/Area	Amount [PPM MOL]	Grp	Name
1.093	BB +	210.38330	5.04069e-3	1.06048		ETHYLENE

Totals : 1.06048

Results obtained with enhanced integrator!

Signal 2: TCD2 B,
Uncalibrated Peaks : compound name not specified

RetTime [min]	Type	Area counts*s	Amt/Area	Amount [PPM MOL]	Grp	Name
3.301	BP +	3181.78955	3.16372e-1	1006.62992		CARBON DIOXIDE

Totals : 1006.62992

Results obtained with enhanced integrator!

=====
*** End of Report ***