

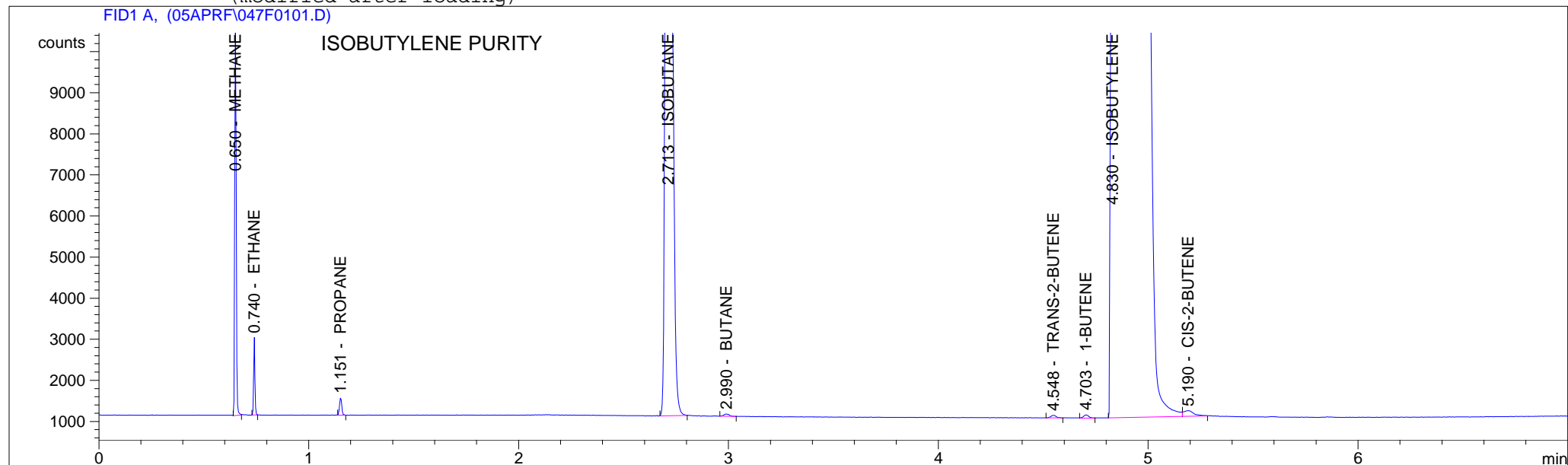
```

=====
Injection Date   : 4/21/05 6:38:46 PM          Seq. Line   :    1
Sample Name     : IBTE021205 10%MX           Vial        :   47
Acq. Operator   : ISGAS GC# 7 FID           Inj         :    1
                                           Inj Volume  : Manually

Acq. Method     : C:\HPCHEM\1\METHODS\S050204.M
Last changed    : 4/21/05 6:43:00 PM by ISGAS GC# 7 FID
                 (modified after loading)

Analysis Method : C:\HPCHEM\1\METHODS\S050204.M
Last changed    : 7/8/05 3:20:00 PM by ISGAS GC7 FID
                 (modified after loading)
=====

```



```

=====
External Standard Report
=====

```

```

Sorted By       :      Signal
Calib. Data Modified : 7/8/05 3:19:45 PM
Multiplier      :      1.0000
Dilution        :      1.0000

```

```

Signal 1: FID1 A,
Uncalibrated Peaks :      compound name not specified

```

RetTime [min]	Type	Area counts*s	Amt/Area	Amount [% MOL]	Grp	Name
0.650	PB +	5261.09863	1.64624e-5	8.66104e-2		METHANE
0.740	BB +	840.81689	6.74036e-6	5.66741e-3		ETHANE
1.151	BB +	310.78488	5.28150e-6	1.64141e-3		PROPANE
2.713	BB +	6.32419e4	4.08459e-6	2.58317e-1		ISOBUTANE
2.990	PB +	96.00935	3.46630e-6	3.32797e-4		BUTANE
4.548	BB +	103.83002	3.72857e-6	3.87138e-4		TRANS-2-BUTENE

RetTime [min]	Type	Area counts*s	Amt/Area	Amount [% MOL]	Grp	Name
4.703	PB +	116.42837	3.97040e-6	4.62267e-4		1-BUTENE
4.830	BB +	2.24270e6	4.16097e-5	93.31824		ISOBUTYLENE
5.190	BB +	448.93546	4.16107e-6	1.86805e-3		CIS-2-BUTENE

Totals : 93.67353

=====
*** End of Report ***